

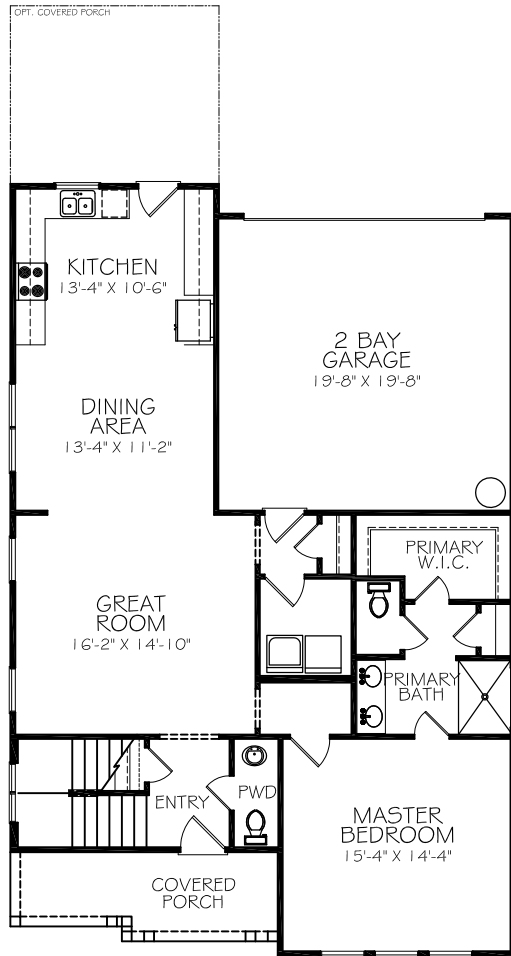


ELEVATION 'A'

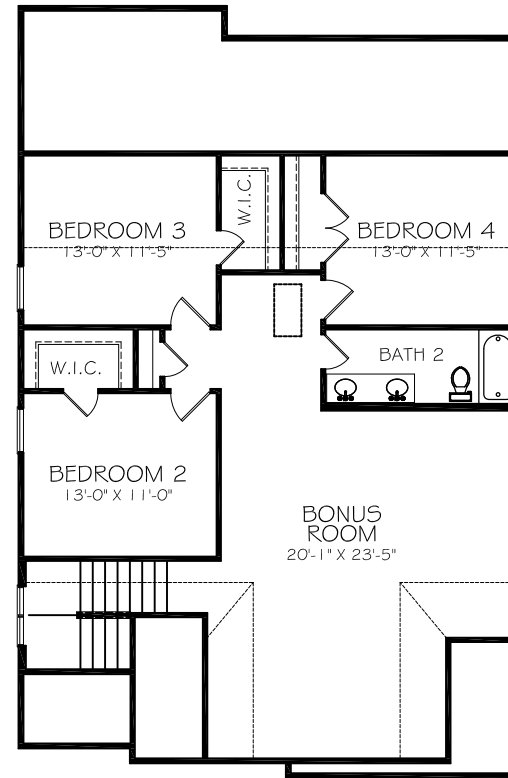
BRADFORD

4 BEDROOM, 2-1/2 BATH, 2 CAR REAR ENTRY GARAGE

MAIN LEVEL: 1,202 SQ. FT.
SECOND LEVEL: 1,200 SQ. FT.
TOTAL FINISHED: 2,402



MAIN LEVEL 'A'
1,202 SQUARE FOOTAGE



SECOND LEVEL 'A'
1,200 SQUARE FOOTAGE